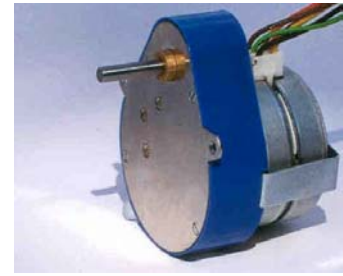


Geared stepper motor

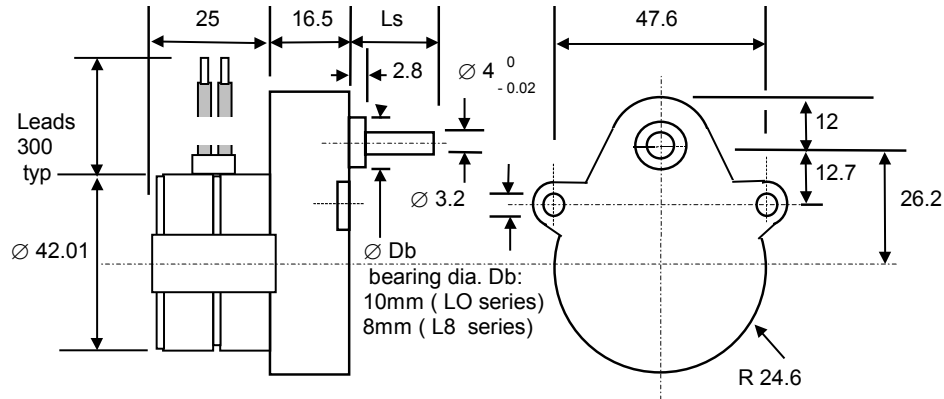
P542-M48 series

The P5-M48 series provides a combination of optimum performance and price for use in instrumentation applications that require digital control of position and speed. Features include:

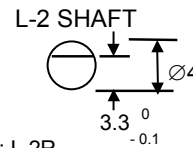


- High performance permanent magnet stepper motor
- Precision Ovoid gearhead incorporating metal gears for optimum torque transmission
- Wide range of standard gear ratio options from stock
- Choice of output shaft options
- Optional integral freewheel and clutch
- Special shaft and gear ratios to meet customer special requirements

Dimensions: mm



Shaft length Ls: plain 20 mm long (L.1 option)
 12.8 mm long with flat (L.2 option):
 Flat length: 9 mm
 Additional options: Integral Clutch : L.2C
 Integral Freewheel CW version : L 2F & CCW version: L 2R



P542-M48 geared stepper motor performance

Geared Stepper Motor	Ratio	Steps per rev. at output	Holding Torque (Ncm)	Max Working Torque (Ncm)	Typical Working Torque (Ncm)
P542-M48 -G01....	25:6	200	19.8	13.5	6.0
-G03	25:4	300	29.7	20.3	9.0
-G04	25:3	400	39.6	27.0	12.0
-G05	10:1	480	42.9	29.3	13.0
-G06	25:2	600	53.6	36.6	16.3
-G08	50:3	800	71.5	48.7	21.7
-G09	20:1	960	85.8	58.5	26.0
-G11	25:1	1,200	100.0	73.1	32.5
-G14	100:3	1,600	100.0	97.5	43.3
-G16	125:3	2,000	100.0	100.0	54.2
-G17	50:1	2,400	100.0	100.0	65.0
-G19	125:2	3,000	100.0	100.0	72.5
-G21	250:3	4,000	100.0	100.0	90.0
-G23	125:1	6,000	100.0	100.0	100.0
-G27	250:1	12,000	Use P535-M48 series for ratios of 250:1 and above		

Standard Versions:	P542-M482U	P42-M481U	Step rate @ typical working torque
Number of phases	4	4	L/R : 300 Hz
Rated voltage (L/R Drive)	12	5	L/4R: 550 Hz
Current per phase (mA)	230	550	
Resistance per phase (Ohms)	52.4	9.1	
Inductance per phase (m H)	51.7	8.1	