

# P5 series geared stepper motors



## P532-ST series compact geared stepper motor

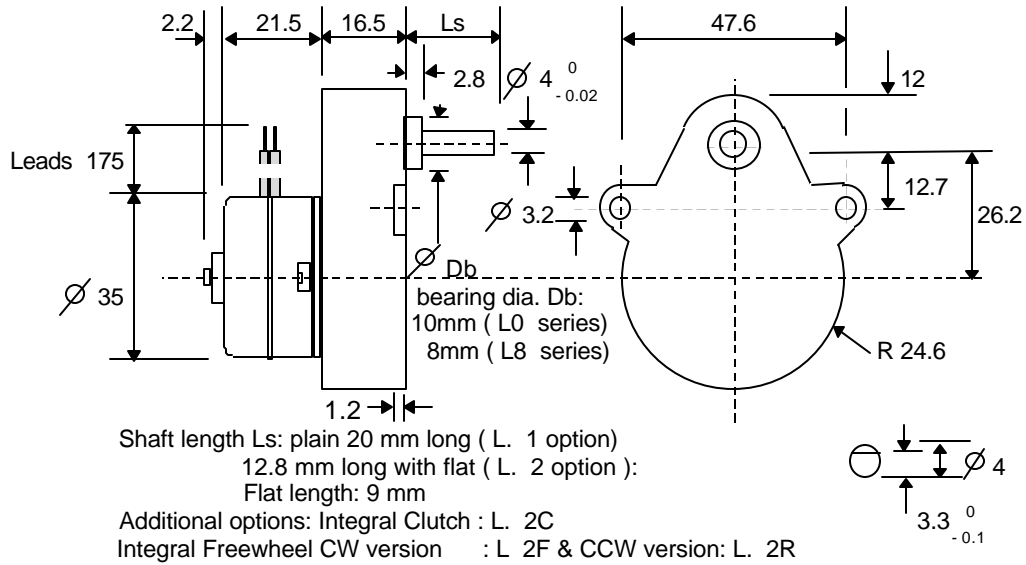
Geared Stepper Motor	Ratio	Steps per rev. at output	Holding Torque ( Ncm )	Max Working Torque ( Ncm )	Typical Working Torque ( Ncm )
P532 ST— -G01....	25:6	200	3.0	2.4	1.5
-G03	25:4	300	4.5	3.6	2.3
-G04	25:3	400	6.0	4.8	3.0
-G05	10:1	480	6.5	5.2	3.3
-G06	25:2	600	8.1	6.5	4.1
-G08	50:3	800	10.8	8.7	5.4
-G09	20:1	960	13.0	10.4	6.5
-G11	25:1	1,200	16.3	13.0	8.1
-G14	100:3	1,600	21.7	17.3	10.8
-G16	125:3	2,000	27.1	21.7	13.5
-G17	50:1	2,400	32.5	26.0	16.3
-G19	125:2	3,000	36.3	29.0	18.1
-G21	250:3	4,000	48.3	38.7	24.2
-G23	125:1	6,000	72.5	58.0	36.3
-G27	250:1	12,000	80.0	80.0	72.5
-G34	500:1	24,000	85.0	85.0	85.0
-G41	1250:1	60,000	90.0	90.0	90.0
-G62	15,000:1	720,000	100.0	100.0	100.0

Standard Versions:	P532-ST001	P532-ST101	Step rate @
Number of phases	4	4	typical working torque
Rated voltage ( L/R Drive)	12	5	L/R : 100 Hz
Current per phase ( m A )	100	220	L/4R: 1250 Hz
Resistance per phase ( Ohms )	120	21	
Inductance per phase ( m H )	160	30	

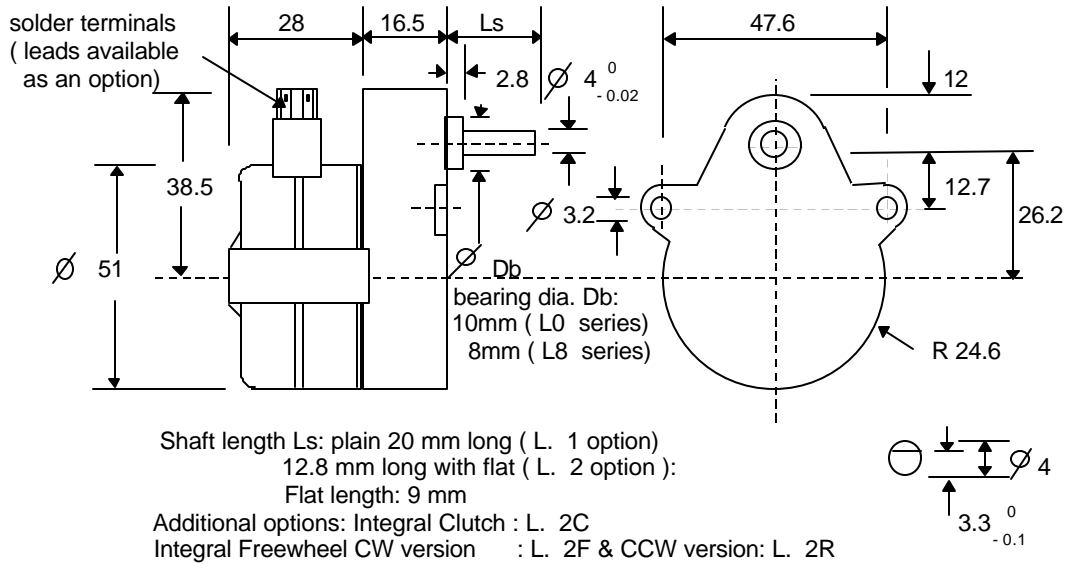
## P531-ST series high torque geared instrument stepper motors

Geared Stepper Motor	Ratio	Steps per rev. at output	Holding Torque ( Ncm )	Max Working Torque ( Ncm )	Typical Working Torque ( Ncm )
P531-ST— -G01....	25:6	200	8.4	6.6	4.5
-G03	25:4	300	12.6	9.9	6.8
-G04	25:3	400	16.8	13.2	9.0
-G05	10:1	480	18.2	14.3	9.8
-G06	25:2	600	22.8	17.9	12.2
-G08	50:3	800	30.3	23.8	16.2
-G09	20:1	960	36.4	28.6	19.5
-G11	25:1	1,200	45.5	35.8	24.4
-G14	100:3	1,600	60.7	47.7	32.5
-G16	125:3	2,000	75.8	59.6	40.6
-G17	50:1	2,400	80.0	71.5	48.8
-G19	125:2	3,000	80.0	79.8	54.4
-G21	250:3	4,000	80.0	80.0	72.5
-G23	125:1	6,000	80.0	80.0	80.0
-G27	250:1	12,000	80.0	80.0	80.0
-G34	500:1	24,000	85.0	85.0	85.0
-G41	1250:1	60,000	90.0	90.0	90.0
-G62	15,000:1	720,000	100.0	100.0	100.0

# P532-ST series geared stepper motors



# P531- ST series geared stepper motors



Standard versions with terminals		P531-ST004	P531-ST104	Step rate @ typical working torque
Number of phases		4	4	L / R : 100 Hz
Rated voltage ( L/R drive)	Vdc	12	5	L /4R : 750 Hz
Current per phase	m A	175	400	
Resistance per phase	Ohms	65	11	
Inductance per phase	m H	100	16	
Versions with flying leads		P531-ST001	P531-ST101	