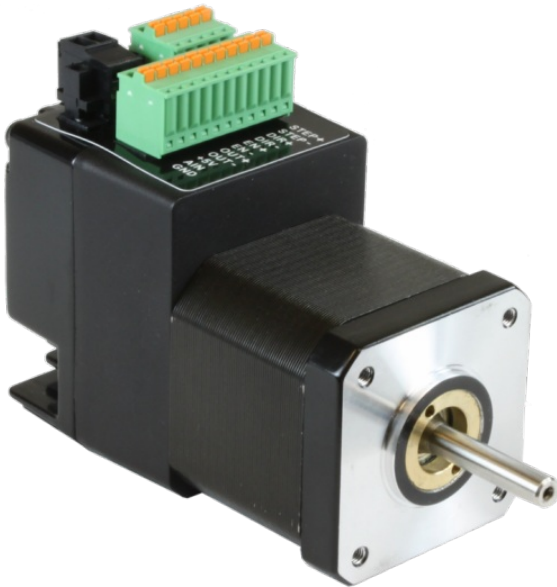


STM17S-3RE

NEMA 17 Integrated Drive+Motor w/ Encoder

1pc. - 335.00
50pc. - 251.25



Product Features

- Sophisticated current control
- Anti-resonance
- Torque ripple smoothing
- Microstep emulation
- NEMA 17 frame size
- Step & direction, CW/CCW pulse, and A/B quadrature pulse control modes
- Velocity (oscillator) control mode
- Streaming serial commands (SCL) control mode
- RS-485 port for programming and communications
- Built-in incremental encoder



Description

The STM17S-3RE integrated stepper is a drive+motor unit, fusing a NEMA 17 step motor and a sophisticated 2.0 A/phase (peak-of-sine) stepper drive into a single device. Power to the drive, located at the rear of the motor, must be supplied by an external DC supply. See Related and Recommended Products below for compatible 24 and 48 volt DC [power supplies](#) .

The STM17S-3RE integrated stepper can operate in the following control modes: step (pulse) & direction, velocity (oscillator), and streaming serial commands (SCL). (*STM17 integrated steppers do not support operation with the Applied Motion 4-axis and 8-axis SiNet Hubs*). All STM17 units are setup and configured using Applied Motion's [ST Configurator™](#) software.

An integral 1000-line (4000 count/rev) incremental encoder is housed inside the same enclosure as the drive electronics, providing protection from dust and debris. The integration of the encoder means the STM17S-3RE can perform special functions not available otherwise. Stall Detection notifies the system as soon as the required torque is too great for the motor, which results in a loss of synchronization between the rotor and stator, also known as stalling. Stall Prevention actually prevents stalling of the step motor by dynamically adjusting motor speed to maintain synchronization of the rotor to the stator under all conditions. This unique feature allows step motors to operate in a much broader range of applications than previously available to step motors, such as torque-control applications. The Stall Prevention feature also performs static position maintenance, which maintains the position of the motor shaft when at rest.




Each STM17 integrated stepper comes with 3 digital inputs, 1 digital output, and 1 analog input. The digital inputs accept signals of 5-24 VDC and can be used for connecting pulse & direction signals, end-of-travel limit switches, jog switches, quadrature encoder signals, PLC outputs, sensors, or many other signal types. The digital output can be connected to PLC inputs, counters, lights, relays, or other devices. The analog input accepts 0-5 VDC signals and can be used for velocity and position control.

The STM17S-3RE comes with an RS-485 port for programming and serial communications.

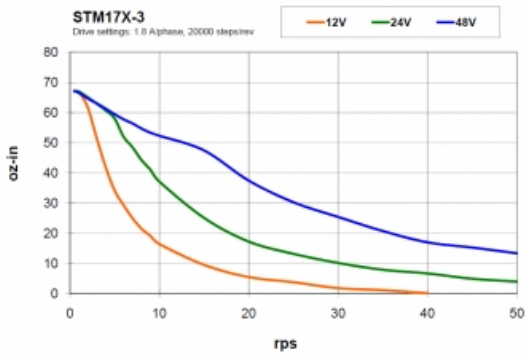
Specifications

Part Number:	STM17S-3RE
Supply Voltage:	12-48 VDC
Supply Voltage Type:	DC
Control Modes:	Step & Direction Velocity (Oscillator) Streaming Commands
Communication Ports:	RS-485
Encoder Feedback:	Yes
Step Resolution:	Full Half Microstepping Microstep Emulation
Idle Current Reduction:	0-90%
Setup Method:	Software setup
Digital Inputs:	3
Digital Outputs:	1
Analog Inputs:	1 single-ended
Circuit Protection:	Short circuit Over-voltage Under-voltage Over-temp
Status LEDs:	1 red, 1 green
Frame Size:	NEMA 17
Holding Torque:	68 oz-in
Step Angle:	1.8 deg
Rotor Inertia:	1.16E-03 oz-in-sec ²
Length:	3.19 inches
Weight:	15.6 oz
Operating Temperature Range:	0-85 °C
Ambient Temperature Range:	0-40 °C
Ambient Humidity:	90% max, non-condensing
Insulation Class:	Class B (130 °C)

Downloads

Speed-Torque Curves:	 STM17-3_torque_curves.pdf
Manuals:	 STM17_Hardware_Manual.pdf  STM17_Quick_Setup_Guide.pdf  Host Command Reference Rev I.pdf
Datasheet:	http://s3.amazonaws.com/applied-motion-pdf/STM17S-3RE.pdf
Family Datasheet:	 STM-Datasheet-925-0009.pdf
2D Drawing:	 STM17-3_RevA.pdf  STM17S-3X_3D.pdf  STM17X-3X_NEW_DESIGN_2D-drawing.pdf
3D Drawing:	 STM17S-3X_Simple.igs  STM17X-3X_NEW.igs
Agency Approvals:	 STM17_23_24_CE_DOC.pdf
Application Notes:	 APPN0018_EZ-Series-Touchpanel-HMI.zip

Torque Curves



Software

Software:	SCL Utility ST Configurator™
Sample Code:	 scldemo.zip

STM17S-3RE Part No. STM17S-3RE	
1pc.	\$335.00
25pc.	\$288.10
50pc.	\$251.25
100pc.	Contact us for 100+ piece pricing.

Products in the Series *STM17 Integrated Steppers*

Part Number	Frame Size	Supply Voltage	Control Modes	Holding Torque	Communication Ports	Encoder Feedback	1pc./50pc.
STM17C-3CE	NEMA 17	12-48 VDC	CANopen	68	RS-232, CANopen	Yes	\$470.00 / \$352.50
STM17C-3CN	NEMA 17	12-48 VDC	CANopen	68	RS-232, CANopen	No	\$408.00 / \$306.00
STM17Q-1AE	NEMA 17	12-48 VDC	Streaming Commands, Analog Positioning, Encoder Following, Q Programming, Modbus	31	RS-232	Yes	\$347.00 / \$260.25
STM17Q-1AN	NEMA 17	12-48 VDC	Streaming Commands, Analog Positioning, Encoder Following, Q Programming, Modbus	31	RS-232	No	\$272.00 / \$204.00
STM17Q-1RE	NEMA 17	12-48 VDC	Streaming Commands, Analog Positioning, Encoder Following, Q Programming, Modbus	31	RS-485	Yes	\$353.00 / \$264.75
STM17Q-1RN	NEMA 17	12-48 VDC	Streaming Commands, Analog Positioning, Encoder Following, Q Programming, Modbus	31	RS-485	No	\$278.00 / \$208.50
STM17Q-2AE	NEMA 17	12-48 VDC	Streaming Commands, Analog Positioning, Encoder Following, Q Programming, Modbus	54	RS-232	Yes	\$350.00 / \$262.50
STM17Q-2AN	NEMA 17	12-48 VDC	Streaming Commands, Analog Positioning, Encoder Following, Q Programming, Modbus	54	RS-232	No	\$275.00 / \$206.25
STM17Q-2RE	NEMA 17	12-48 VDC	Streaming Commands, Analog Positioning, Encoder Following, Q Programming, Modbus	54	RS-485	Yes	\$356.00 / \$267.00
STM17Q-2RN	NEMA 17	12-48 VDC	Streaming Commands, Analog Positioning, Encoder Following, Q Programming, Modbus	54	RS-485	No	\$281.00 / \$210.75
STM17Q-3AE	NEMA 17	12-48 VDC	Streaming Commands, Analog Positioning, Encoder Following, Q Programming, Modbus	68	RS-232	Yes	\$353.00 / \$264.75
STM17Q-3AN	NEMA 17	12-48 VDC	Streaming Commands, Analog Positioning, Encoder Following, Q Programming, Modbus	68	RS-232	No	\$288.00 / \$216.00
STM17Q-3RE	NEMA 17	12-48 VDC	Streaming Commands, Analog Positioning, Encoder Following, Q Programming, Modbus	68	RS-485	Yes	\$360.00 / \$270.00
STM17Q-3RN	NEMA 17	12-48 VDC	Streaming Commands, Analog Positioning, Encoder Following, Q Programming, Modbus	68	RS-485	No	\$295.00 / \$221.25
STM17R-3ND	NEMA 17	12-48 VDC	Step & Direction	68	NA	No	\$118.00 / \$118.00
STM17R-3NE	NEMA 17	12-48 VDC	Step & Direction	68	NA	Yes	\$192.00 / \$192.00
STM17R-3NN	NEMA 17	12-48 VDC	Step & Direction	68	NA	No	\$117.00 / \$117.00
STM17S-1AE	NEMA 17	12-48 VDC	Step & Direction, Velocity (Oscillator), Streaming Commands	31	RS-232	Yes	\$317.00 / \$237.75
STM17S-1AN	NEMA 17	12-48 VDC	Step & Direction, Velocity (Oscillator), Streaming Commands	31	RS-232	No	\$242.00 / \$181.50
STM17S-1RE	NEMA 17	12-48 VDC	Step & Direction, Velocity (Oscillator), Streaming Commands	31	RS-485	Yes	\$325.00 / \$243.75
STM17S-1RN	NEMA 17	12-48 VDC	Step & Direction, Velocity (Oscillator), Streaming Commands	31	RS-485	No	\$250.00 / \$187.50
STM17S-2AE	NEMA 17	12-48 VDC	Step & Direction, Velocity (Oscillator), Streaming Commands	54	RS-232	Yes	\$324.00 / \$243.00
STM17S-2AN	NEMA 17	12-48 VDC	Step & Direction, Velocity (Oscillator), Streaming Commands	54	RS-232	No	\$249.00 / \$186.75
STM17S-2RE	NEMA 17	12-48 VDC	Step & Direction, Velocity (Oscillator), Streaming Commands	54	RS-485	Yes	\$331.00 / \$248.25
STM17S-2RN	NEMA 17	12-48 VDC	Step & Direction, Velocity (Oscillator), Streaming Commands	54	RS-485	No	\$256.00 / \$192.00
STM17S-3AE	NEMA 17	12-48 VDC	Step & Direction, Velocity (Oscillator), Streaming Commands	68	RS-232	Yes	\$328.00 / \$246.00

			Streaming Commands				\$246.00
STM17S-3AN	NEMA 17	12-48 VDC	Step & Direction, Velocity (Oscillator), Streaming Commands	68	RS-232	No	\$263.00 / \$197.25
STM17S-3RE	NEMA 17	12-48 VDC	Step & Direction, Velocity (Oscillator), Streaming Commands	68	RS-485	Yes	\$335.00 / \$251.25
STM17S-3RN	NEMA 17	12-48 VDC	Step & Direction, Velocity (Oscillator), Streaming Commands	68	RS-485	No	\$270.00 / \$202.50
TSM17C-1CG	NEMA 17	12-48 VDC	Q Programming, CANopen	40	CANopen	Yes	\$547.00 / \$410.25
TSM17C-2CG	NEMA 17	12-48 VDC	Q Programming, CANopen	59	CANopen	Yes	\$551.00 / \$413.25
TSM17C-3CG	NEMA 17	12-48 VDC	Q Programming, CANopen	73	CANopen	Yes	\$554.00 / \$415.50
TSM17P-1AG	NEMA 17	12-48 VDC	Step & Direction, Encoder Following	40	RS-232	Yes	\$378.00 / \$283.50
TSM17P-2AG	NEMA 17	12-48 VDC	Step & Direction, Encoder Following	59	RS-232	Yes	\$380.00 / \$285.00
TSM17P-3AG	NEMA 17	12-48 VDC	Step & Direction, Encoder Following	73	RS-232	Yes	\$383.00 / \$287.25
TSM17Q-1AG	NEMA 17	12-48 VDC	Analog Torque / Velocity, Streaming Commands, Analog Positioning, Encoder Following, Q Programming, Velocity Control, Modbus	40	RS-232	Yes	\$412.00 / \$309.00
TSM17Q-1RG	NEMA 17	12-48 VDC	Analog Torque / Velocity, Streaming Commands, Analog Positioning, Encoder Following, Q Programming, Velocity Control, Modbus	40	RS-485	Yes	\$418.00 / \$313.50
TSM17Q-2AG	NEMA 17	12-48 VDC	Analog Torque / Velocity, Streaming Commands, Analog Positioning, Encoder Following, Q Programming, Velocity Control, Modbus	59	RS-232	Yes	\$415.00 / \$311.25
TSM17Q-2RG	NEMA 17	12-48 VDC	Analog Torque / Velocity, Streaming Commands, Analog Positioning, Encoder Following, Q Programming, Velocity Control, Modbus	59	RS-485	Yes	\$391.00 / \$293.25
TSM17Q-3AG	NEMA 17	12-48 VDC	Analog Torque / Velocity, Streaming Commands, Analog Positioning, Encoder Following, Q Programming, Velocity Control, Modbus	73	RS-232	Yes	\$418.00 / \$313.50
TSM17Q-3RG	NEMA 17	12-48 VDC	Analog Torque / Velocity, Streaming Commands, Analog Positioning, Encoder Following, Q Programming, Velocity Control, Modbus	73	RS-485	Yes	\$424.00 / \$318.00
TSM23C-2CG	NEMA 23	12-70 VDC	Q Programming, CANopen	142	CANopen	Yes	\$562.00 / \$421.50
TSM23C-3CG	NEMA 23	12-70 VDC	Q Programming, CANopen	212	CANopen	Yes	\$576.00 / \$432.00
TSM23C-4CG	NEMA 23	12-70 VDC	Q Programming, CANopen	340	CANopen	Yes	\$631.00 / \$473.25
TSM23P-2AG	NEMA 23	12-70 VDC	Step & Direction, Encoder Following	142	RS-232	Yes	\$392.00 / \$294.00
TSM23P-3AG	NEMA 23	12-70 VDC	Step & Direction, Encoder Following	212	RS-232	Yes	\$403.00 / \$302.25
TSM23P-4AG	NEMA 23	12-70 VDC	Step & Direction, Encoder Following	340	RS-232	Yes	\$445.00 / \$333.75
TSM23Q-2AG	NEMA 23	12-70 VDC	Analog Torque / Velocity, Streaming Commands, Analog Positioning, Encoder Following, Q Programming, Velocity Control, Modbus	142	RS-232	Yes	\$507.00 / \$380.25
TSM23Q-2RG	NEMA 23	12-70 VDC	Analog Torque / Velocity, Streaming Commands, Analog Positioning, Encoder Following, Q Programming, Velocity Control, Modbus	142	RS-485	Yes	\$514.00 / \$385.50
TSM23Q-3AG	NEMA 23	12-70 VDC	Analog Torque / Velocity, Streaming Commands, Analog Positioning, Encoder Following, Q Programming, Velocity Control, Modbus	212	RS-232	Yes	\$521.00 / \$390.75
TSM23Q-3RG	NEMA 23	12-70 VDC	Analog Torque / Velocity, Streaming Commands, Analog Positioning, Encoder Following, Q Programming, Velocity Control, Modbus	212	RS-485	Yes	\$529.00 / \$396.75
TSM23Q-4AG	NEMA 23	12-70 VDC	Analog Torque / Velocity, Streaming Commands, Analog Positioning, Encoder Following, Q Programming, Velocity Control, Modbus	340	RS-232	Yes	\$576.00 / \$432.00

TSM23Q-4RG	NEMA 23	12-70 VDC	Analog Torque / Velocity, Streaming Commands, Analog Positioning, Encoder Following, Q Programming, Velocity Control, Modbus	340	RS-485	Yes	\$584.00 / \$438.00
----------------------------	---------	-----------	--	-----	--------	-----	---------------------