



**Applied  
Motion  
Products**

Applied Motion Products, Inc.  
404 Westridge Dr.  
Watsonville, CA 95076, USA

1-888-984-3990  
Tel (831) 761-6555  
Fax (831) 761-6544

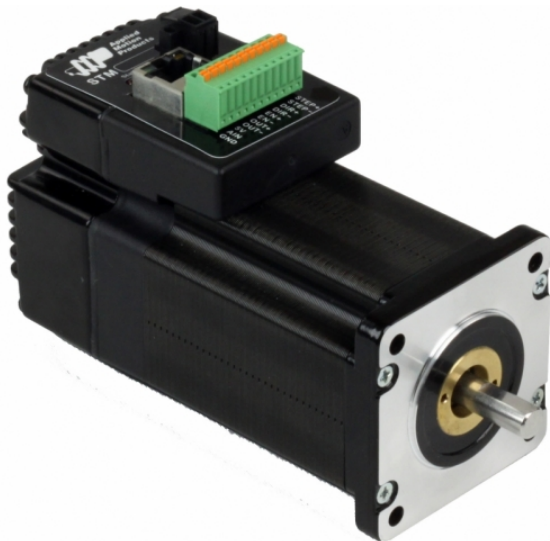
**Product Datasheet**

[www.Applied-Motion.com](http://www.Applied-Motion.com)

## STM24Q-3EE

NEMA 24 Integrated Drive+Motor w/ Ethernet & Encoder

1pc. - 576.00  
50pc. - 432.00



### Product Features

- Sophisticated current control
- Anti-resonance
- Torque ripple smoothing
- Microstep emulation
- NEMA 24 frame size
- Q programming control mode for stand-alone operation
- Capable of all "S" control modes
- Fast 10/100 Ethernet for programming and communications
- UDP & TCP support
- Built-in incremental encoder



## Description

The STM24Q-3EE integrated stepper is a drive+motor unit, fusing a NEMA 24 step motor and a sophisticated 6.0 A/phase (peak-of-sine) stepper drive into a single device. Power to the drive, located at the rear of the motor, must be supplied by an external DC supply. See Related and Recommended Products below for compatible 24 and 48 volt DC [power supplies](#).

The STM24Q-3EE integrated stepper can operate in all of the same control modes as the S option, plus the ability to run a Q program stored in non-volatile memory. Q programs are created using Applied Motion's [Q Programmer™](#) software, which provides powerful commands for motion, I/O, conditional processing, multi-tasking, math functions, and more. The STM24Q is setup and configured using Applied Motion's [ST Configurator™](#) software.

An integral 1000-line (4000 count/rev) incremental encoder is housed inside the same enclosure as the drive electronics, providing protection from dust and debris. The integration of the encoder means the STM24Q can perform special functions not available otherwise. Stall Detection notifies the system as soon as the required torque is too great for the motor, which results in a loss of synchronization between the rotor and stator, also known as stalling. Stall Prevention actually prevents stalling of the step motor by dynamically adjusting motor speed to maintain synchronization of the rotor to the stator under all conditions. This unique feature allows step motors to operate in a much broader range of applications than previously available to step motors, such as torque-control applications. The Stall Prevention feature also performs static position maintenance, which maintains the position of the motor shaft when at rest.

Each STM24Q integrated stepper comes with 3 digital inputs, 1 digital output, and 1 analog input. The digital inputs accept signals of 5-24 VDC and can be used for connecting pulse & direction signals, end-of-travel limit switches, jog switches, quadrature encoder signals, PLC outputs, sensors, or many other signal types. The digital output can be connected to PLC inputs, counters, lights, relays, or other devices. The analog input accepts 0-5 VDC signals and can be used for velocity and position control.

The STM24Q-3EE comes with an Ethernet port for configuration, programming and communications. The Ethernet port is fast 10/100 Mbit, and the drive supports both TCP and UDP communication protocols.

All STM24Q models are CE approved and RoHS compliant.


Please note that a VL series gearhead purchased for this motor will require a special mounting adaptor and 2 weeks lead time. Please contact customer service for the price of this adaptor.

## Specifications

<b>Part Number:</b>	STM24Q-3EE
<b>Supply Voltage:</b>	12-70 VDC
<b>Supply Voltage Type:</b>	DC
<b>Control Modes:</b>	Streaming Commands Analog Positioning Encoder Following Q Programming
<b>Communication Ports:</b>	Ethernet
<b>Encoder Feedback:</b>	Yes
<b>Step Resolution:</b>	Full Half Microstepping Microstep Emulation
<b>Idle Current Reduction:</b>	0-90%
<b>Setup Method:</b>	Software setup
<b>Digital Inputs:</b>	3
<b>Digital Outputs:</b>	1
<b>Analog Inputs:</b>	1 single-ended
<b>Circuit Protection:</b>	Short circuit Over-voltage Under-voltage Over-temp
<b>Status LEDs:</b>	1 red, 1 green
<b>Frame Size:</b>	NEMA 24
<b>Holding Torque:</b>	340 oz-in
<b>Step Angle:</b>	1.8 deg
<b>Rotor Inertia:</b>	1.27E-02 oz-in-sec <sup>2</sup>
<b>Length:</b>	4.94 inches
<b>Weight:</b>	56 oz
<b>Operating Temperature Range:</b>	0 to 85 °C
<b>Ambient Temperature Range:</b>	0 to 40 °C
<b>Ambient Humidity:</b>	90% max, non-condensing
<b>Insulation Class:</b>	Class B (130 °C)

## Downloads

### Speed-Torque Curves:

 [STM24\\_speed-torque.pdf](#)

### Manuals:

 [STM24 Hardware Manual\\_920-0044E.pdf](#)

 [STM23\\_24\\_Ethernet\\_Quicksetup\\_920-0058B.pdf](#)

 [Host Command Reference Rev I.pdf](#)

### Datasheet:

<http://s3.amazonaws.com/applied-motion-pdf/STM24Q-3EE.pdf>

### 2D Drawing:

 [STM24X-3X\\_2D.pdf](#)

 [STM24\\_3D\\_Model-Simple.pdf](#)

### 3D Drawing:

 [STM24\\_3D\\_model.igs](#)

### Application Notes:

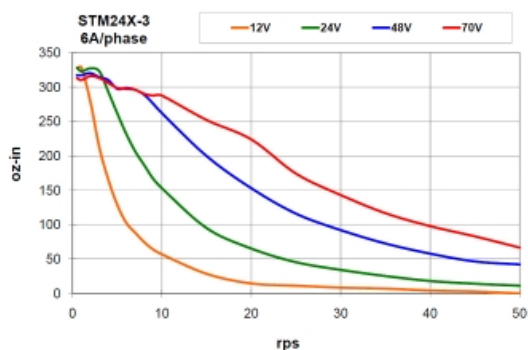
 [APPN0021\\_5V-Keepalive-Circuit.pdf](#)

 [APPN0020-Maple-Systems-with-Ethernet-Drive.zip](#)

 [APPN0019\\_Analog-positioning-using-Q-program.zip](#)

## Torque Curves

Note: all torque curves were measured at 20,000 steps/rev.



## Software

### Software:

[SCL Utility](#)  
[ST Configurator™](#)

### Sample Code:

 [C\\_sharp\\_UDP\\_example.zip](#)

 [VB6\\_UDP\\_example.zip](#)

 [VB6\\_TCP\\_example.zip](#)

STM24Q-3EE	
Part No. STM24Q-3EE	
1pc.	\$576.00
25pc.	\$495.36
50pc.	\$432.00
100pc.	<a href="#">Contact us</a> for 100+ piece pricing.

Products in the Series *STM24 Integrated Steppers*

Part Number	Frame Size	Supply Voltage	Control Modes	Holding Torque	Communication Ports	Encoder Feedback	1pc./50pc.
<a href="#">STM24IP-3EE</a>	NEMA 24	12-70 VDC	Streaming Commands, Analog Positioning, Encoder Following, Q Programming, EtherNet/IP	340	Ethernet, EtherNet/IP	Yes	\$626.00 / \$469.50
<a href="#">STM24IP-3EN</a>	NEMA 24	12-70 VDC	Streaming Commands, Analog Positioning, Encoder Following, Q Programming, EtherNet/IP	340	Ethernet, EtherNet/IP	No	\$551.00 / \$413.25
<a href="#">STM24Q-3EE</a>	NEMA 24	12-70 VDC	Streaming Commands, Analog Positioning, Encoder Following, Q Programming	340	Ethernet	Yes	\$576.00 / \$432.00
<a href="#">STM24Q-3EN</a>	NEMA 24	12-70 VDC	Streaming Commands, Analog Positioning, Encoder Following, Q Programming	340	Ethernet	No	\$501.00 / \$375.75
<a href="#">STM24QF-3AE</a>	NEMA 24	12-70 VDC	Streaming Commands, Analog Positioning, Encoder Following, Q Programming, Modbus	340	RS-232	Yes	\$564.00 / \$423.00
<a href="#">STM24QF-3AN</a>	NEMA 24	12-70 VDC	Streaming Commands, Analog Positioning, Encoder Following, Q Programming, Modbus	340	RS-232	No	\$489.00 / \$366.75
<a href="#">STM24QF-3RE</a>	NEMA 24	12-70 VDC	Streaming Commands, Analog Positioning, Encoder Following, Q Programming, Modbus	340	RS-485	Yes	\$572.00 / \$429.00
<a href="#">STM24QF-3RN</a>	NEMA 24	12-70 VDC	Streaming Commands, Analog Positioning, Encoder Following, Q Programming, Modbus	340	RS-485	No	\$497.00 / \$372.75
<a href="#">STM24S-3EE</a>	NEMA 24	12-70 VDC	Step & Direction, Velocity (Oscillator), Streaming Commands	340	Ethernet	Yes	\$486.00 / \$364.50
<a href="#">STM24S-3EN</a>	NEMA 24	12-70 VDC	Step & Direction, Velocity (Oscillator), Streaming Commands	340	Ethernet	No	\$411.00 / \$308.25
<a href="#">STM24SF-3AE</a>	NEMA 24	12-70 VDC	Step & Direction, Velocity (Oscillator), Streaming Commands	340	RS-232	Yes	\$474.00 / \$355.50
<a href="#">STM24SF-3AN</a>	NEMA 24	12-70 VDC	Step & Direction, Velocity (Oscillator), Streaming Commands	340	RS-232	No	\$399.00 / \$299.25
<a href="#">STM24SF-3RE</a>	NEMA 24	12-70 VDC	Step & Direction, Velocity (Oscillator), Streaming Commands	340	RS-485	Yes	\$482.00 / \$361.50
<a href="#">STM24SF-3RN</a>	NEMA 24	12-70 VDC	Step & Direction, Velocity (Oscillator), Streaming Commands	340	RS-485	No	\$407.00 / \$305.25

## Products in the Series *STM23 Integrated Steppers*

Part Number	Frame Size	Supply Voltage	Control Modes	Holding Torque	Communication Ports	Encoder Feedback	1pc./50pc.
<a href="#">STM23C-3CE</a>	NEMA 23	12-70 VDC	CANopen	210	RS-232, CANopen	Yes	\$535.00 / \$401.25
<a href="#">STM23C-3CN</a>	NEMA 23	12-70 VDC	CANopen	210	RS-232, CANopen	No	\$460.00 / \$345.00
<a href="#">STM23IP-2EE</a>	NEMA 23	12-70 VDC	Streaming Commands, Analog Positioning, Encoder Following, Q Programming, EtherNet/IP	125	Ethernet, EtherNet/IP	Yes	\$525.00 / \$393.75
<a href="#">STM23IP-2EN</a>	NEMA 23	12-70 VDC	Streaming Commands, Analog Positioning, Encoder Following, Q Programming, EtherNet/IP	125	Ethernet, EtherNet/IP	No	\$450.00 / \$337.50
<a href="#">STM23IP-3EE</a>	NEMA 23	12-70 VDC	Streaming Commands, Analog Positioning, Encoder Following, Q Programming, EtherNet/IP	210	Ethernet, EtherNet/IP	Yes	\$535.00 / \$401.25
<a href="#">STM23IP-3EN</a>	NEMA 23	12-70 VDC	Streaming Commands, Analog Positioning, Encoder Following, Q Programming, EtherNet/IP	210	Ethernet, EtherNet/IP	No	\$460.00 / \$345.00
<a href="#">STM23Q-2AE</a>	NEMA 23	12-70 VDC	Streaming Commands, Analog Positioning, Encoder Following, Q Programming, SiNet Hub Compatible, Modbus	125	RS-232	Yes	\$440.00 / \$330.00
<a href="#">STM23Q-2AN</a>	NEMA 23	12-70 VDC	Streaming Commands, Analog Positioning, Encoder Following, Q Programming, SiNet Hub Compatible, Modbus	125	RS-232	No	\$365.00 / \$273.75
<a href="#">STM23Q-2EE</a>	NEMA 23	12-70 VDC	Streaming Commands, Analog Positioning, Encoder Following, Q Programming	125	Ethernet	Yes	\$452.00 / \$339.00
<a href="#">STM23Q-2EN</a>	NEMA 23	12-70 VDC	Streaming Commands, Analog Positioning, Encoder Following, Q Programming	125	Ethernet	No	\$377.00 / \$282.75
<a href="#">STM23Q-2RE</a>	NEMA 23	12-70 VDC	Streaming Commands, Analog Positioning, Encoder Following, Q Programming, Modbus	125	RS-485	Yes	\$447.00 / \$335.25
<a href="#">STM23Q-2RN</a>	NEMA 23	12-70 VDC	Streaming Commands, Analog Positioning, Encoder Following, Q Programming, Modbus	125	RS-485	No	\$372.00 / \$279.00
<a href="#">STM23Q-3AE</a>	NEMA 23	12-70 VDC	Streaming Commands, Analog Positioning, Encoder Following, Q Programming, SiNet Hub Compatible, Modbus	210	RS-232	Yes	\$456.00 / \$342.00
<a href="#">STM23Q-3AN</a>	NEMA 23	12-70 VDC	Streaming Commands, Analog Positioning, Encoder Following, Q Programming, SiNet Hub Compatible, Modbus	210	RS-232	No	\$381.00 / \$285.75
<a href="#">STM23Q-3EE</a>	NEMA 23	12-70 VDC	Streaming Commands, Analog Positioning, Encoder Following, Q Programming	210	Ethernet	Yes	\$468.00 / \$351.00
<a href="#">STM23Q-3EN</a>	NEMA 23	12-70 VDC	Streaming Commands, Analog Positioning, Encoder Following, Q Programming	210	Ethernet	No	\$393.00 / \$294.75
<a href="#">STM23Q-3RE</a>	NEMA 23	12-70 VDC	Streaming Commands, Analog Positioning, Encoder Following, Q Programming, Modbus	210	RS-485	Yes	\$463.00 / \$347.25
<a href="#">STM23Q-3RN</a>	NEMA 23	12-70 VDC	Streaming Commands, Analog Positioning, Encoder Following, Q Programming, Modbus	210	RS-485	No	\$388.00 / \$291.00
<a href="#">STM23R-2ND</a>	NEMA 23	12-70 VDC	Step & Direction	125	NA	No	\$172.00 / \$172.00
<a href="#">STM23R-2NE</a>	NEMA 23	12-70 VDC	Step & Direction	125	NA	Yes	\$219.00 / \$219.00
<a href="#">STM23R-2NN</a>	NEMA 23	12-70 VDC	Step & Direction	125	NA	No	\$172.00 / \$172.00
<a href="#">STM23R-3ND</a>	NEMA 23	12-70 VDC	Step & Direction	210	NA	No	\$189.00 / \$189.00
<a href="#">STM23R-3NE</a>	NEMA 23	12-70 VDC	Step & Direction	210	NA	Yes	\$230.00 / \$230.00
<a href="#">STM23R-3NN</a>	NEMA 23	12-70 VDC	Step & Direction	210	NA	No	\$189.00 / \$189.00
<a href="#">STM23S-2AE</a>	NEMA 23	12-70 VDC	Step & Direction, Velocity (Oscillator), Streaming Commands, SiNet Hub Compatible	125	RS-232	Yes	\$350.00 / \$262.50
<a href="#">STM23S-2AN</a>	NEMA 23	12-70 VDC	Step & Direction, Velocity (Oscillator), Streaming Commands, SiNet Hub	125	RS-232	No	\$275.00 /

<a href="#">STM23S-2-EE</a>	NEMA 23	12-70 VDC	Streaming Commands, SiNet Hub Compatible	125	RS-485	No	\$206.25
<a href="#">STM23S-2-EE</a>	NEMA 23	12-70 VDC	Step & Direction, Velocity (Oscillator), Streaming Commands	125	Ethernet	Yes	\$362.00 / \$271.50
<a href="#">STM23S-2-EN</a>	NEMA 23	12-70 VDC	Step & Direction, Velocity (Oscillator), Streaming Commands	125	Ethernet	No	\$287.00 / \$215.25
<a href="#">STM23S-2-RE</a>	NEMA 23	12-70 VDC	Step & Direction, Velocity (Oscillator), Streaming Commands	125	RS-485	Yes	\$357.00 / \$267.75
<a href="#">STM23S-2-RN</a>	NEMA 23	12-70 VDC	Step & Direction, Velocity (Oscillator), Streaming Commands	125	RS-485	No	\$282.00 / \$211.50
<a href="#">STM23S-3-AE</a>	NEMA 23	12-70 VDC	Step & Direction, Velocity (Oscillator), Streaming Commands, SiNet Hub Compatible	210	RS-232	Yes	\$366.00 / \$274.50
<a href="#">STM23S-3-AN</a>	NEMA 23	12-70 VDC	Step & Direction, Velocity (Oscillator), Streaming Commands, SiNet Hub Compatible	210	RS-232	No	\$291.00 / \$218.25
<a href="#">STM23S-3-EE</a>	NEMA 23	12-70 VDC	Step & Direction, Velocity (Oscillator), Streaming Commands	210	Ethernet	Yes	\$378.00 / \$283.50
<a href="#">STM23S-3-EN</a>	NEMA 23	12-70 VDC	Step & Direction, Velocity (Oscillator), Streaming Commands	210	Ethernet	No	\$303.00 / \$227.25
<a href="#">STM23S-3-RE</a>	NEMA 23	12-70 VDC	Step & Direction, Velocity (Oscillator), Streaming Commands	210	RS-485	Yes	\$373.00 / \$279.75
<a href="#">STM23S-3-RN</a>	NEMA 23	12-70 VDC	Step & Direction, Velocity (Oscillator), Streaming Commands	210	RS-485	No	\$298.00 / \$223.50
<a href="#">STM24IP-3-EE</a>	NEMA 24	12-70 VDC	Streaming Commands, Analog Positioning, Encoder Following, Q Programming, EtherNet/IP	340	Ethernet, EtherNet/IP	Yes	\$626.00 / \$469.50
<a href="#">STM24IP-3-EN</a>	NEMA 24	12-70 VDC	Streaming Commands, Analog Positioning, Encoder Following, Q Programming, EtherNet/IP	340	Ethernet, EtherNet/IP	No	\$551.00 / \$413.25
<a href="#">STM24Q-3-EE</a>	NEMA 24	12-70 VDC	Streaming Commands, Analog Positioning, Encoder Following, Q Programming	340	Ethernet	Yes	\$576.00 / \$432.00
<a href="#">STM24Q-3-EN</a>	NEMA 24	12-70 VDC	Streaming Commands, Analog Positioning, Encoder Following, Q Programming	340	Ethernet	No	\$501.00 / \$375.75
<a href="#">STM24S-3-EE</a>	NEMA 24	12-70 VDC	Step & Direction, Velocity (Oscillator), Streaming Commands	340	Ethernet	Yes	\$486.00 / \$364.50
<a href="#">STM24S-3-EN</a>	NEMA 24	12-70 VDC	Step & Direction, Velocity (Oscillator), Streaming Commands	340	Ethernet	No	\$411.00 / \$308.25