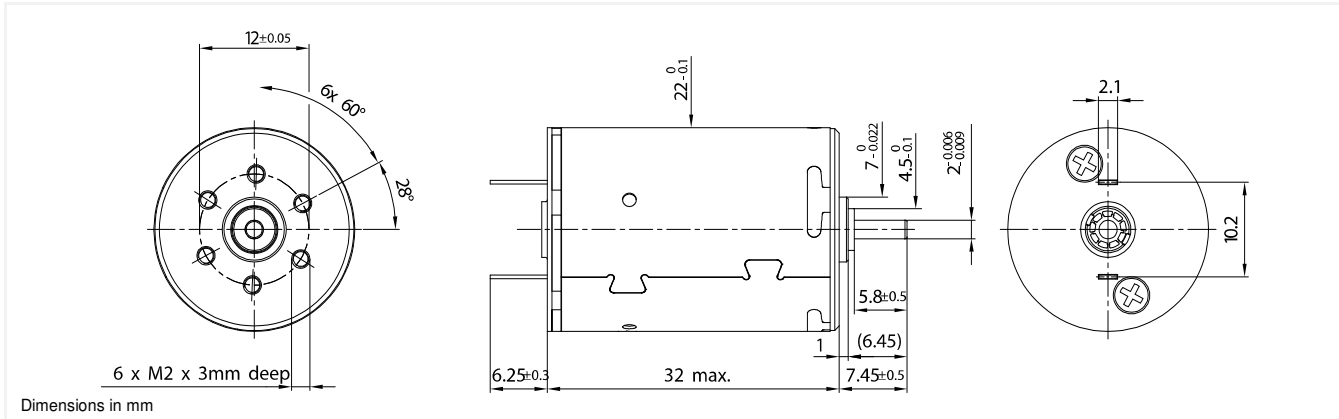


22DCP Athlonix™

Graphite-Copper commutation

Ø22mm

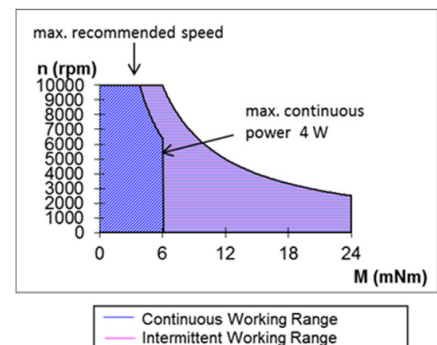
6.21 mNm



22DCP 32G1 **** .1

Electrical Data	****	212E	211E	210E	209E	208E	
1 Nominal Voltage	V	21	24	30	36	48	Volt
2 No-Load Speed	n_0	10,201	10,308	10,645	10,123	10,889	rpm
3 No-Load Current	I_0	23.5	20.8	17.2	13.6	11.0	mA
4 Terminal Resistance	R	23.6	30.6	46.3	71.9	112.8	Ω
5 Output Power	$P_{2max.}$	4.0	4.1	4.2	3.9	4.3	W
6 Stall Torque	mNm	16.56 (2.35)	16.53 (2.35)	16.53 (2.35)	16.09 (2.28)	17 (2.41)	mNm (oz-in)
7 Efficiency	$\eta_{max.}$	70	70	70	70	70	%
8 Max Continuous Speed	$n_{e max.}$	10,000	10,000	10,000	10,000	10,000	rpm
9 Max Continuous Torque	$M_{e max.}$	5.81 (0.83)	5.77 (0.82)	5.67 (0.81)	5.74 (0.82)	5.69 (0.81)	mNm (oz-in)
10 Max Continuous Current	$I_{e max.}$	0.33	0.29	0.23	0.19	0.15	A
11 Back-EMF Constant	k_E	2.00	2.27	2.74	3.46	4.29	mV/rpm
12 Torque Constant	k_M	19.14	21.64	26.20	33.03	41.01	mNm/A
13 Motor Regulation	R/k^2	64.5	65.3	67.4	65.89	67.07	10 ³ /Nms
14 Friction Torque	T_F	0.45 (0.07)	0.45 (0.07)	0.45 (0.07)	0.45 (0.07)	0.45 (0.07)	mNm (oz-in)
15 Mechanical Time Constant	τ_m	30.3	30.2	30.1	30.1	30.0	ms
16 Rotor Inertia	J	4.70	4.63	4.47	4.56	4.48	g.cm ²
General Data							
17 Thermal Resistance (rotor/body)	R_{th1} / R_{th2}			6/22			°C/W
18 Thermal Time Constant (rotor/stator)	t_{w1}/t_{w2}			9/550			S
19 Operating Temperature Range:	t_{w1}/t_{w2}			-30 °C to 85 °C (-22 °F to 185 °F)			°C (°F)
	rotor			100 °C (212 °F)			°C (°F)
20 Shaft Load Max.:				With sleeve bearings			
(5mm from bearing)	-radial			1.5 (5.4)			N (oz)
	-axial			100 (359.6)			N (oz)
21 Shaft Play:	-radial			0.03 (0.0012)			mm (inch)
	-axial			0.15 (0.0059)			mm (inch)
22 Weight	g			58 (2.05)			g (oz)

Execution			
Gearbox	Single Shaft	MR2	E9
R22	4	5	6
M22	1	2	3
K24	7	8	9
K27	1	2	3



Note:
 G1: standard commutation
 G2: special commutation for double shaft version