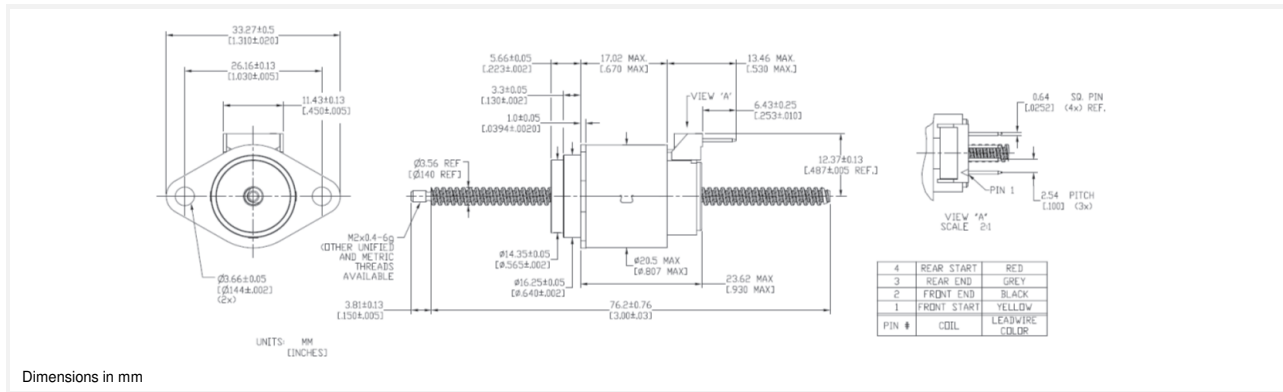


20DBM-L

RoHS Compliant

Ø20mm

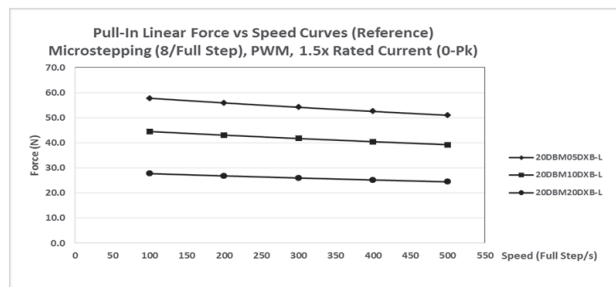
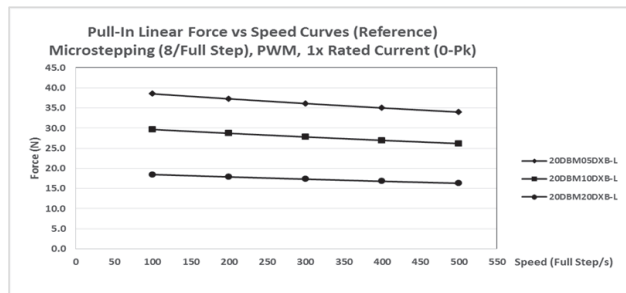
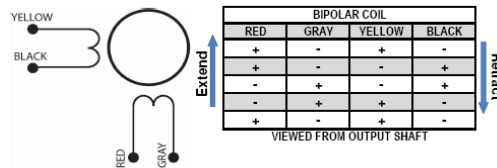
50 N



20DBM-L

Electrical Data	20DBMXXD2B-L	20DBMXXD1B-L	20DBMXXD3B-L	20DBMXXD4B-L		
	Bipolar	Bipolar	Bipolar	Bipolar		
1 Operating Voltage #	12	5	2.9	1.4	VDC	
2 Resistance per Phase, ± 10%	100.5	17.5	5.7	1.4	Ohms	
3 Inductance per Phase, typ	45.0	7.0	2.4	0.6	mH	
4 Rated Current per Phase, 1 Phase ON	0.17	0.41	0.71	1.41	A	
5 Input Power	2.9	2.9	2.9	2.9	W	
Coil independent parameters						
	XX	Linear travel per step				
6 Min. Holding Force @ rated current	05	@ .0005" (0.0127mm)			50 (180)	N (oz)
	10	@ .001" (0.0254mm)			35 (126)	N (oz)
	20	@ .002" (0.0508mm)			22 (79)	N (oz)
7 Min. Holding Force (Unenergized)	05	@ .0005" (0.0127mm)			50 (180)	N (oz)
	10	@ .001" (0.0254mm)			13.9 (50)	N (oz)
	20	@ .002" (0.0508mm)			5.5 (20)	N (oz)
8 Stroke Length, Typ				50 (1.97)	mm (in)	
9 Linear Travel Accuracy				± 1 Step		
10 Steps per Revolution				48		
11 Ambient Temperature Range (operating)			-20 to +70 (-4 to +158)		°C (°F)	
12 Maximum Coil Temperature			130 (266)		°C (°F)	
13 Bearing Type			Ball Bearing			
14 Insulation Resistance at 500 VDC			20		Mohms	
15 Dielectric Withstanding Voltage			650 for 2 seconds		VAC	
16 Weight			35 (1.23)		g (oz)	
17 Leadwire						

All Motor Data Values at 20 °C Unless Otherwise Specified # Voltage in case of voltage driver (indicator of R*)



Curves created with a 5 Volt motor and a 24 Volt power supply.