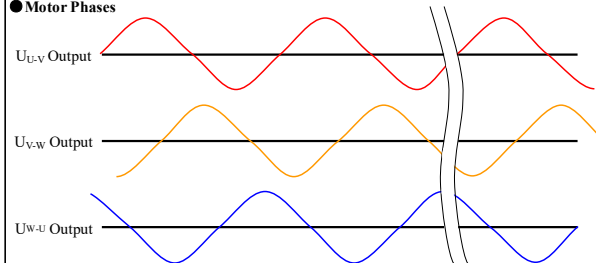


Motor Specifications

| | | | |
|----|-----------------------------------|--|------------------|
| 1 | Drive Input from Power Supply | | 208~240VAC |
| 2 | Basic DC Bus Voltage | V (DC) | 320V |
| 3 | Rated Output Power | Watts | 1500 |
| 4 | Rated Speed | rpm | 3000 |
| 5 | Max. Mechanical Speed | rpm | 5700 |
| 6 | Rated Torque | Nm | 4.9 |
| 7 | Continuous Stall Torque | Nm | 5.4 |
| 8 | Peak Torque | Nm | 14.7 |
| 9 | Rated Current | A (rms) | 9.6 |
| 10 | Continuous Stall Current | A (rms) | 9.6 |
| 11 | Peak Current | A (rms) | 36.5 |
| 12 | Voltage Constant ±10% | V(rms)/K rpm | 34.1 |
| 13 | Torque Constant ±10% | Nm/A(rms) | 0.563 |
| 14 | Winding Resistance(Line-Line)±10% | Ohm @20°C | 0.43 |
| 15 | Winding Inductance(Line-Line)±20% | mH | 4.6 |
| 16 | Inertia | kg m ² | 0.000325 |
| 17 | Thermal Resistance(mounted) | °C / W | 1.04 |
| 18 | Thermal Time Constant | Minutes | 24 |
| 19 | Heat Sink Size(Aluminum) | mm | 300×300×12 |
| 20 | Shaft Load - Axial | N (max.) | 90 N / 20.2 Lbf |
| 21 | Shaft Load - Radial(End of Shaft) | N (max.) | 270 N / 60.6 Lbf |
| 22 | Weight | kg | 5.8 kg / 12.8 Lb |
| 23 | Approvals | cULus,CE,RoHS | |
| 24 | Encoder Resolution & Protocol | 21bit Absolute Multi-turn TMGW Protocol | |
| 25 | Encoder Type | Magnetic | |
| 26 | Insulation Class | F (155°C) | |
| 27 | IP rating | IP65(except shaft through hole and cable end connector) | |
| 28 | Installation Location | Indoors, free from direct sunlight, corrosive gas, inflammable gas | |
| 29 | Ambient Temperature | Operating 0 to 40°C, Storage -20 to 80°C | |
| 30 | Ambient Humidity (max.) | 85% (free from condensing) | |
| 31 | Altitude (max.) | 1000 m | |
| 32 | Vibration Resistance | 10-150Hz 49 m/s ² | |
| 33 | Rotor Poles | 10 | |

Shaft Load: (L₁₀ life, 20,000 hours, 2,000 RPM)

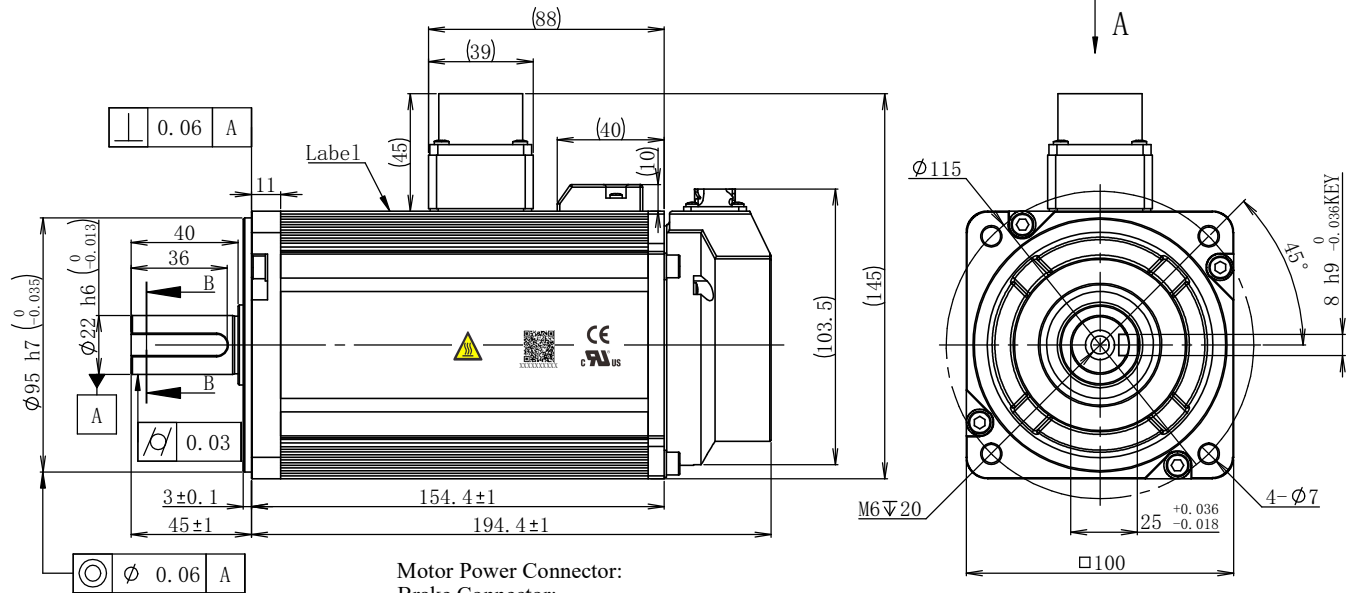
Motor Phases



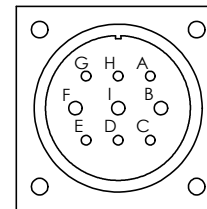
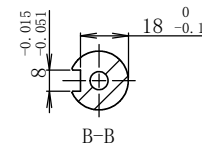
All the timing logics are obtained in CCW rotation as viewed from front shaft.

Notes:

1. A shaft seal is shipped with motor, but not installed.
2. A KEY is shipped with motor, but not installed.



Motor Power Connector:
 Brake Connector:
 XMS3102A20-18S(EUMACX)

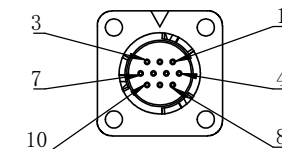


View A

| | | | | | |
|--------|-----|-----|------|---|-----|
| Pin# | A | B | C | D | E |
| Signal | GND | W | +24V | 0 | N/C |
| Pin# | F | G | H | I | |
| Signal | U | N/C | N/C | V | |

Stratic Friction Torque:8N.m

Encoder Connector:
 XM10-S10S-C(EUMACX)



View A

| | | | | | |
|--------|----------|-----|-----|-----|----------|
| Pin# | 1 | 2 | 3 | 4 | 5 |
| Signal | 5V | GND | SD- | SD+ | Battery+ |
| Pin# | 6 | 7 | 8 | 9 | 10 |
| Signal | Battery- | N/C | N/C | N/C | Shield |

Item Number
S0035

| | | | | | |
|---|---------------|--------------------------|-------------|------------|------|
| Unit: mm | | | | | |
| First Angle Method | | | | | |
| Tolerances for linear and angular dimensions without individual tolerance indications | A1 | 1 | | 2023.12.01 | |
| GB/T 1804-m eqv ISO 2768-1:m | AO | | Preliminary | 2023.08.03 | |
| Geometrical tolerance for features without individual tolerance indications | REV | Sign | Quantity | ECN NO. | Date |
| GB/T 1184-K eqv ISO 2768-2:K | Design | | | Technology | |
| UNLESS OTHERWISE SPECIFIED | Standard | | | Audit | |
| | Check | | | Approve | |
| | Marketing Dep | <input type="checkbox"/> | | Date | |



SM3L-103AXBUV
 4611170001637
 Stage Quality Scale
 D 1:2
 Sheet 1 of 1

Shanghai AMP & MOONS' Automation Co.,Ltd