

TXM

TXM24-S/O Quick Setup Guide



Requirements

To begin, make sure you have the following equipment:

- A small flat blade screwdriver for tightening the connectors (included).
 - A 12-70V DC power supply.
 - A personal computer running Microsoft Windows 98, 2000, ME, NT, XP, Vista or 7 (32 or 64 bit) and Windows 8.
 - Step-Servo Quick Tuner software (available at www.applied-motion.com/products/software).
 - A 3004-277-5M power cable, 3004-290-5M I/O cable (optional), and for RS-232 models: 3004-278-5M RS-232 programming cable.
 - **NOTE: The 3004-278-5M Programming Cable is NOT included and must be purchased separately.**
- For RS-485 models: an RS-422 or RS-485 port or adapter for your PC (see reverse for recommended RS-485 adapter)
- For more detailed information, please download and read the TXM24 Hardware Manual, available at www.applied-motion.com/support/manuals.

Step 1

- a) Download and install the Step-Servo Quick Tuner software.
- b) Launch the software by clicking: Start / Programs / Applied Motion Products / Step-Servo Quick Tuner
- c) Select the correct COM port using the drop down list
- d) Connect the drive to your PC using the RS-232 programming cable or RS-422/485 adaptor

Step 2

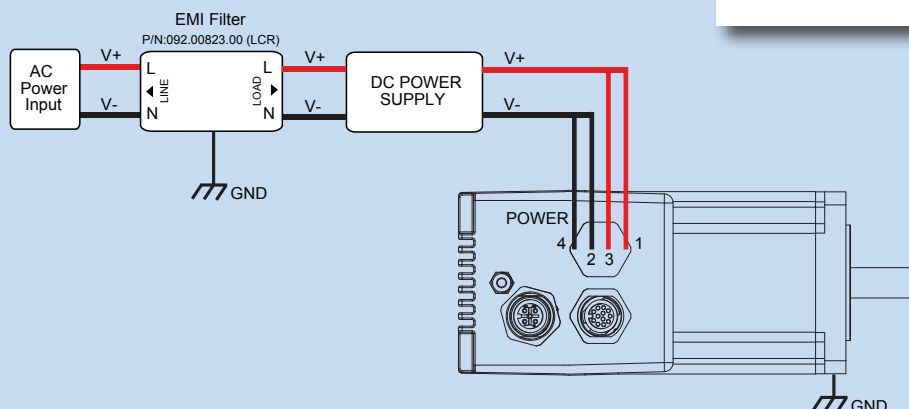
Wire the drive to the DC power source.

(Do not apply power until Step 3)

Note - the TXM24 accepts DC voltages from 12-70V. If using an external fuse, we recommend a 5 amp fast acting fuse.
(See the TXM24 Hardware Manual for more information about power supply and fuse selection.)

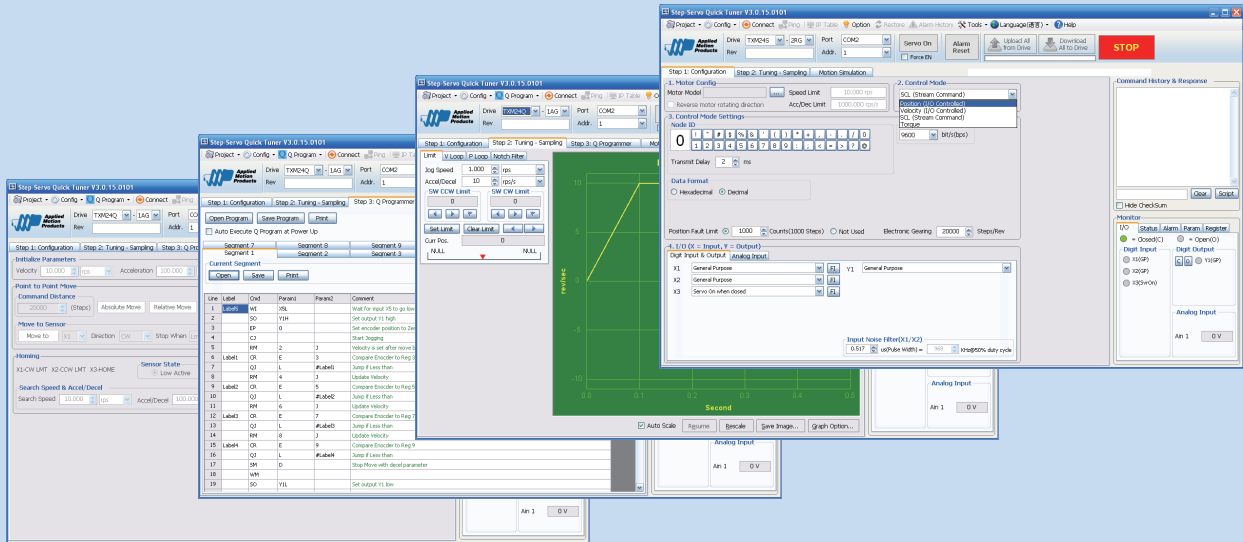
Connect I/O, if required by your application. A 3004-290-5M cable will be required.

(See the TXM24 Hardware Manual for more information about wiring I/O to the TXM24.)



Step3

- Apply power to the drive. The drive model and firmware revision should be automatically displayed. If they are not, check the com port setting.
- Follow the configuration instructions in the Step-Servo Quick Tuner help screens.
- The Step-Servo Quick Tuner software can be used to set up your drive to operate in several different modes including: Pulse & Direction, Analog Velocity, and SCL.
- Step-Servo Quick Tuner includes a self test option (under the Drive menu) to verify that the TXM and power supply are correctly wired and configured.



If you have any questions or comments, please call Applied Motion Products Customer Support: (800) 525-1609, or visit us online at www.applied-motion.com.

Recommended RS-485 Adapter USB-COMi-M (P/N 8500-003)

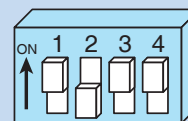
- Available from Applied Motion Product
- Converts RS-422 and RS-485 to USB

For four wire RS-485, set SW2 to OFF and SW1,3,4 to ON. On the USB-COMi-M screw terminal connector:

- Connect pin 1 to RX-
- Connect pin 2 to RX+
- Connect pin 3 to TX+
- Connect pin 4 to TX-
- Connect pin 6 to GND
- The DB-9 connector is not used



**4 Wire
RS-485**



404 Westridge Dr.
Watsonville, CA 95076, USA
1-800-525-1609
Tel (831) 761-6555
Fax (831) 761-6544
www.applied-motion.com

TXM24-S/Q Quick Setup Guide

920-0092 Rev A