

TXM

TXM24C Quick Setup Guide



Requirements

To begin, make sure you have the following equipment:

- A 12-70V DC power supply.
- A personal computer running Microsoft Windows 98, 2000, ME, NT, XP, Vista or 7 (32 or 64 bit) and Windows 8.
- Step-Servo Quick Tuner software (available at www.applied-motion.com/products/software).
- A CAN communication cable for connecting to the CAN network.
- For more detailed information, please download and read the TXM24 Hardware Manual, available at www.applied-motion.com/support/manuals.

Step1- Wiring

Wire the drive to the DC power source.

(Do not apply power until Step 3)

Note - the TXM24 accepts DC voltages from 12-70V. If using an external fuse, we recommend a 5 amp fast acting fuse.

(See the TXM24 Hardware Manual for more information about power supply and fuse selection.)

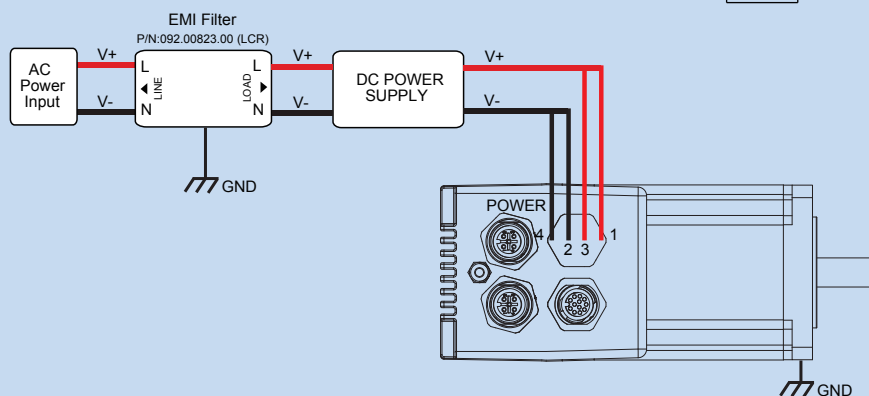
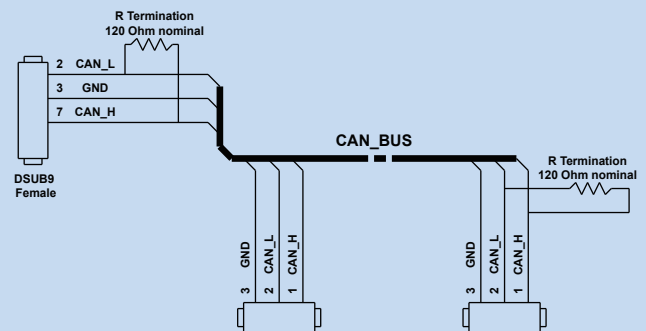
- Connect I/O, if required by your application. A 3004-290-5M cable will be required.

(See the TXM24 Hardware Manual for more information about wiring I/O to the TXM24.)

- Connect to CAN network.

Applied Motion Products TXM24C drives use a CAN communication cable 3004-311-5M, that conforms to the DR303 specification. The cable should be wired in a daisy-chain configuration with a 120 Ohm resistor used to terminate each end.

- Connect the RS-232 programming cable.



Step2 - Step-Servo Quick Tuner

- Download and install Step-Servo Quick Tuner software, available at www.applied-motion.com.
- Launch the software by clicking Start/Programs/Applied Motion Products/Step-Servo Quick Tuner
- If you have any questions or comments, please call Applied Motion Products Customer Support 800-525-1609 or visit us online www.applied-motion.com.

Step3 - Configuration

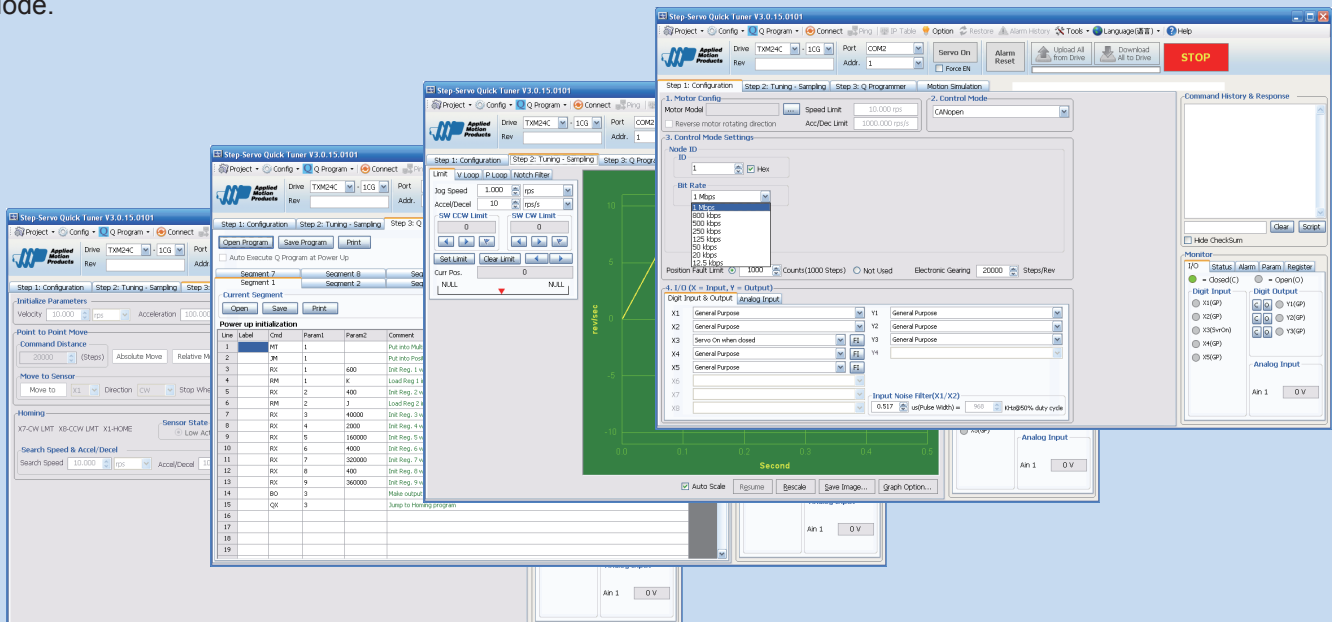
- Apply power to the drive.
- Use the Step-Servo Quick Tuner to set up the motor current, limit switches, I/O, tuning and Q program.
- Set BitRate, Node ID

CANopen Bitrate - AMP CANopen drives have two settings, one for Bit Rate and another for Node ID. The Bit Rate is configured using Step-Servo Quick Tuner.

The Node ID is configured using Step-Servo Quick Tuner also. Valid ranges for the Node ID are 0x01 through 0x7F. Node ID 0x00 is reserved in accordance to DS301 specification.

Note: The Node ID and Bit Rate is captured only after a power cycle, or after a network reset command has been sent. Changing the switches while the drive is powered on will NOT change the Node ID and Bit Rate until one of these conditions has also been met.

- The Step-Servo Quick Tuner includes a self test option (under the Drive menu) to verify that the TXM24C and power supply are correctly wired and configured.
- When configuration is complete, exit the Step-Servo Quick Tuner the drive will automatically switch to CANopen Mode.



If you have any questions or comments, please call Applied Motion Products Customer Support: (800) 525-1609, or visit us online at www.applied-motion.com.



404 Westridge Dr.
Watsonville, CA 95076, USA
1-800-525-1609
Tel (831) 761-6555
Fax (831) 761-6544
www.applied-motion.com

TXM24C Quick Setup Guide

920-0093 Rev. A